

Smart Mobility



## Overview

GETEC is an engineering service provider in the field of vehicle and drivetrain which focus on drivetrain product development, vehicle engineering service, smart mobility, drivetrain & vehicle testing. We can provide professional and customization engineering and testing service for our customers.

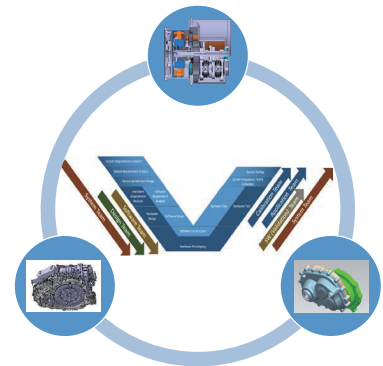
## Introduction

The smart mobility of vehicles has gradually become mainstream trend of the future development of the automotive industry GETEC has also been continuously exploring and researching on mobile intelligence.

## Business Scope

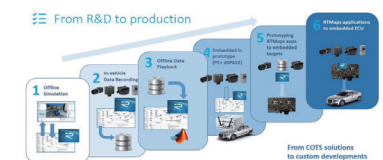
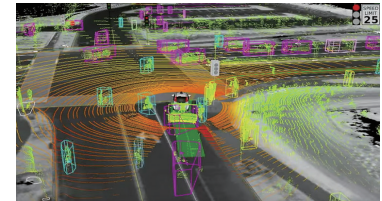
### ► Smart Drivetrain and Electric Mobility

- Engineering Service
  - System benchmark
  - System development (HW/EE/SW)
  - System testing & calibration
  - System integration & verification
  - Functional safety consulting
- Family Products
  - Conventional drivetrain system (AMT/DCT)
  - Hybrid drivetrain system (DHT/EDS)
  - All wheel drive system (4WD/eAWD)



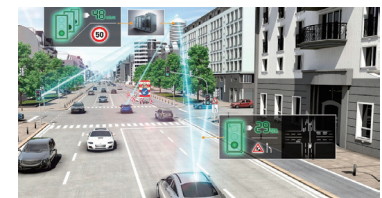
### ► Smart Automated Mobility

- Engineering Service
  - ADAS/AD system benchmark
  - ADAD/AD system development
  - ADAS/AD system testing & calibration
  - ADAS/AD system integration & verification
  - Functional safety consulting
  - SOTIF consulting
- Family Products
  - L1 system (LKA/ACC)
  - L2 system (ALCA/TJA)
  - L3~L4 system (GT-Pilot)



### ► Smart Connected Mobility

- Engineering Service
  - V2X system benchmark
  - V2X system development
  - V2X system testing & calibration
  - V2X system integration & verification
  - Functional safety consulting
  - Cyber Security consulting
- Family Products
  - V2V system (C-ACC)
  - V2C system (OTA data exchange/Remote diagnostic)
  - V2P system (GT-Touch)



## GETEC Getriebe Technik GmbH

### German HQ

📍 Galileo-Allee 2 52457 Aldenhoven  
☎ +49 (0) 2464 90266 - 00  
📠 +49 (0) 2464 90266 - 29  
🌐 [www.getec-gmbh.com](http://www.getec-gmbh.com)

### GETEC Technical Center China

📍 G1-1001 GENWAY I-PARK No.88 Dongchang RD. SIP Suzhou 215028



GETEC Website